

Cosmos

HETEROGENEOUS



Luna **9844**
NCS S 1502-B w/r 9844
LRV 47.5



Storm **9845**
NCS S 3502-B w/r 9845
LRV 26.4



Oatmeal **9840**
NCS S 2005-G90Y w/r 9840
LRV 43.4



Moleskin **9841**
NCS S 3005-Y20R w/r 9841
LRV 27.8



Steel Blue **9852**
NCS S 6020-B10G w/r 9852
LRV 9.9



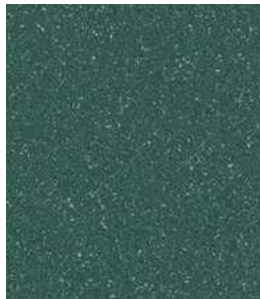
Midnight **9854**
NCS S 7005-R80B w/r 9854
LRV 10.2



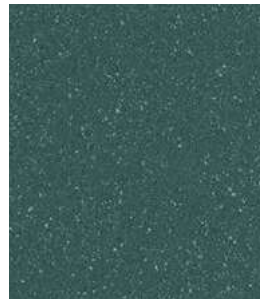
Taupe **9843**
NCS S 7502-Y w/r 9843
LRV 9.5



Meadow **9850**
NCS S 2050-G90Y w/r 9850
LRV 31.7



Teal **9851**
NCS S 6020-B70G w/r 9851
LRV 11.0



Woodland **9853**
NCS S 6020-R50G w/r 9853
LRV 11.4



Jet **9842**
NCS S 8000-N w/r 9842
LRV 7.9



Flaxen **9849**
NCS S 0560-Y w/r 9849
LRV 43.9



Burnt Orange **9848**
NCS S 3040-Y40R w/r 9848
LRV 24.0



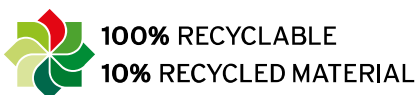
Mulberry **9846**
NCS S 6010-R30B w/r 9846
LRV 12.5



Plum **9847**
NCS S 6020-R10B w/r 9847
LRV 8.9

Variation in colour and design is a feature of this product intended to enhance the natural appearance of the floor.

w/r = weld rod NCS = Natural Colour System LRV = Light Reflectance Value



*Refer to BRE Global ratings on www.greenbooklive.com

Concrete

HETEROGENEOUS



Light Grey Concrete **9858**
NCS S 3000-N

w/r 9858
LRV 40.2



Warm Concrete **9855**
NCS S 3502-R

w/r 9855
LRV 25.0



Cool Concrete **9856**
NCS S 4500-N

w/r 9856
LRV 21.9



Dark Grey Concrete **9857**
NCS S 6502-R

w/r 9857
LRV 12.8



Light Industrial Concrete **9860**
NCS S 2500-N

w/r 9860
LRV 35.1



Dark Industrial Concrete **9859**
NCS S 4502-R

w/r 9859
LRV 24.1



Copper Ornamental **9861**
NCS S 5502-R

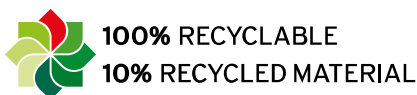
w/r 9861
LRV 18.8



Onyx Ornamental **9862**
NCS S 7000-N

w/r 9862
LRV 11.0

Variation in colour and design is a feature of this product intended to enhance the natural appearance of the floor.
w/r = weld rod NCS = Natural Colour System LRV = Light Reflectance Value



*Refer to BRE Global ratings on www.greenbooklive.com



Wood



White Pine **9834**
WV 9834
LVP 973



Silver Oak **9826**
WV 9826
LVP 976



Sun Bleached Oak **9825**
WV 9825
LVP 974



Warm Limited Ash **9832**
WV 9832
LVP 971



Roasted Limited Ash **9831**
WV 9831
LVP 973



Painted Chevron **9828**
WV 9828
LVP 110



Grey Weathered Chevron **9829**
WV 9829
LVP 116



Classic Limited Ash **9833**
WV 9833
LVP 987



Blond Pine **9839**
WV 9839
LVP 113



Blond Oak **9820**
WV 9820
LVP 977

Wood



English Oak **9823**
WV 9823
LVP 972



Reclaimed Chevron **9830**
WV 9830
LVP 973



Honey Oak **9821**
WV 9821
LVP 220



Toasted Oak **9822**
WV 9822
LVP 972



Ayer Oak **9824**
WV 9824
LVP 971



Golden Pine **9838**
WV 9838
LVP 977



Bronzed Pine **9835**
WV 9835
LVP 971



Smoked Oak **9827**
WV 9827
LVP 973



Silvered Pine **9836**
WV 9836
LVP 970



Charcoal Pine **9837**
WV 9837
LVP 970

WV = wood

WV 9838 and above may vary from the sample shown when installed in full color. **PROTECT** the flooring with a high quality finish. **PROTECT** the floor with a high quality finish.



WV 9866 and above may vary from the sample shown when installed in full color. **PROTECT** the flooring with a high quality finish. **PROTECT** the floor with a high quality finish.



EXPONIA® FLOW
Infinity



Honey Beech **9869**
WV 9869
LVP 972



Aurum Rain **9864**
WV 9864
LVP 972



Espresso **9867**
WV 9867
LVP 972



Night Sky **9865**
WV 9865
LVP 975



9866
WV 9866
LVP 975