

Polysafe™ Stone & Wood

RRL Pendulum Test
36+
Sustainable Slip Resistance

P3
AS 4586



SAFETY FLOORING FOR
**CONTEMPORARY
SPACES**

CREATE SPACES WITHIN SPACES

CONTEMPORARY DESIGN

Polysafe Stone & Wood fx is a distinctive collection developed to capture the beauty and authenticity of material surfaces with the built-in reassurance of sustainable wet slip resistance. This heavy-duty vinyl sheet safety flooring features 34 commercial floor designs with high clarity stone, concrete and wood effects across a range of warm and cool hues.

The Polysafe Stone & Wood fx collection presents endless possibilities to realise a safe, contemporary interior space. Create unique flooring designs or multi-functional zoning with the complementary stone and wood shades.

ENGINEERED FOR SAFETY

Virtually invisible aluminium oxide particles are integrated throughout the performance layer to provide a safety flooring which is both functional and beautiful.

These carborundum-free safety particles ensure that Polysafe Stone & Wood fx offers full HSE compliance and sustainable wet slip resistance, achieving **36+** on the pendulum wet tests.



SAFETY FLOORING THAT COMBINES BEAUTY WITH PERFORMANCE

Spaces to WORK

FRONT OF HOUSE SAFETY ASSURANCE

Contrasting stone and wood effect flooring beautifully demonstrates how design and function go hand in hand. The perfect solution for busy retail interiors where the flooring aesthetic and safety performance are a priority.

Protect customers and employees in environments with heavy footfall such as entrances and walkways by specifying a safety floor that can handle potential slip risks from trafficked contaminants and daily spillages.



STUNNING
SCHEMES
WITH SAFETY
ASSURED





Spaces to LIVE

CALM AND WELCOMING TONES

The variety of contemporary stone designs and warm wood effects can be used individually for a homely interior or in combination to create harmonious zones in larger spaces.

Attractive designs combined with safety flooring properties that can withstand daily spillages and contaminants make this Polysafe Stone & Wood fx collection perfect for any shared living, housing or commercial setting.

FUNCTIONAL ZONES FOR SAFE OPEN PLAN LIVING



Spaces to HEAL

HYGIENIC AND LOW MAINTENANCE

Soothing shades of warm concrete and wood give hospital interiors a fresh and non-clinical feel to foster comfortable environments that both patients and staff find uplifting and positive.

Maintaining the look of a floor covering is vital, particularly in highly visible areas which need to be kept hygienic and safe. The tried and trusted Polysafe PUR reinforcement assures both ease of maintenance and optimum appearance levels for design led front of house areas.

WELCOMING
& HYGIENIC
WITH BUILT-IN
SLIP RESISTANCE





Spaces to ENJOY

IDEAL FOR LARGE SCALE AREAS

For those seeking contemporary, design-led interiors, the stunning urban and light concrete reproductions allow complete design freedom, meeting all safety and maintenance requirements for large scale customer facing spaces.

Ideally suited to retail and leisure interiors with heavy commercial footfall, Polysafe Stone & Wood fx can be laid throughout a facility, including areas that have exterior access or pose a risk of spillage.

AMBIENT BACKDROPS FOR DINNER & DRINKS



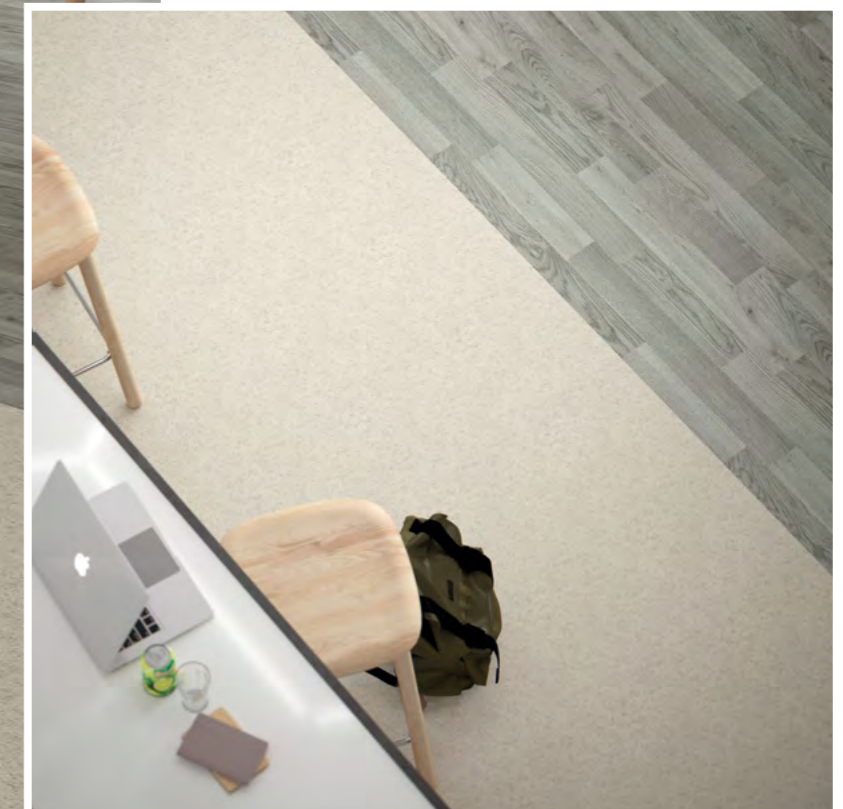
Spaces to LEARN

POTENTIAL SPILLAGES

Polysafe Stone & Wood fx has the assurance of sustainable wet slip resistance throughout its guaranteed life and is suitable for large scale educational interiors, particularly in busy food serving areas where there is a risk of spillages.

Create pleasant, comfortable and practical environments with a choice of calming tonal greys across the stone and wood floor designs to guide users with wayfinding or functional zoning.

MULTI-FUNCTIONAL
SOLUTIONS TO
STUDY, EAT OR
SIMPLY MEET



Polysafe™ Wood fx PUR



Oiled Oak 3374
plank w/l: 166 x 1500mm

w/r 3374
LRV 37



Sun Bleached Oak 3372
plank w/l: 200 x 1500mm

w/r 3372
LRV 31



Silver Oak 3357
plank w/l: 83 x 333/666mm

w/r 3237
LRV 23



Roasted Limed Ash 3375
plank w/l: 166 x 1500mm

w/r 9831
LRV 30



Tropical Pine 3376
plank w/l: 166 x 1500mm

w/r 9822
LRV 22



American Oak 3387
plank w/l: 100 x 1000mm

w/r 3380
LRV 37



Warm Beech 3297
plank w/l: 100 x 500mm

w/r 3290
LRV 35



Rustic Oak 3337
plank w/l: 83 x 333/666mm

w/r 3330
LRV 26



Classic Oak 3107
plank w/l: 166 x 1500mm

w/r 3330
LRV 29



European Oak 3347
plank w/l: 100 x 1000mm

w/r 3340
LRV 23



Aged Oak 3373
plank w/l: 200 x 1500mm

w/r 9824
LRV 9

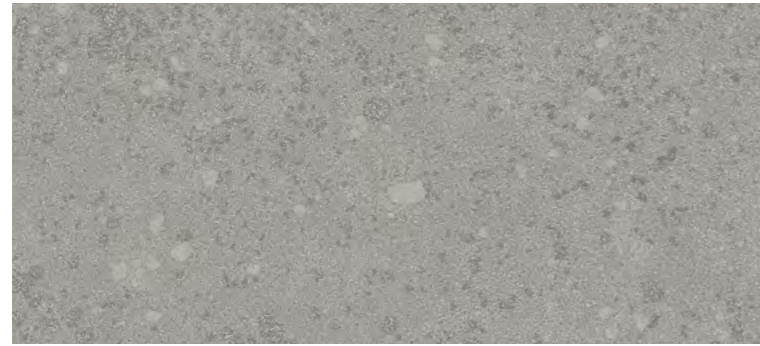


Nero Oak 3371
plank w/l: 125 x 1000mm

w/r 9842
LRV 7

Complementary
and Contrasting
STONE & WOOD

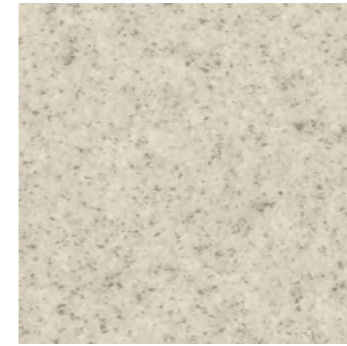
Polysafe™ Stone fx PUR



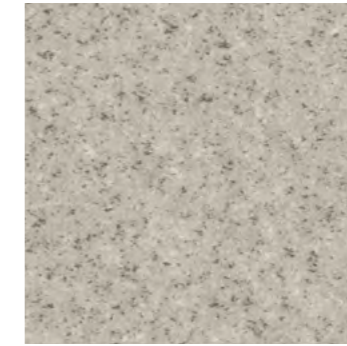
Dove Slate 6012
NCS S 3502-G w/r 6012 LRV 35



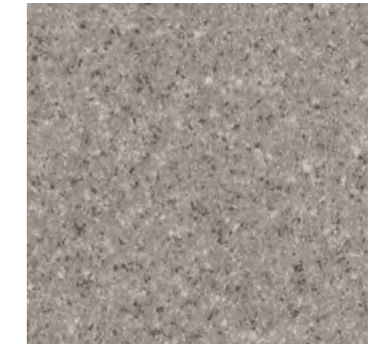
Urban Concrete 6013
NCS S 5502-Y w/r 6013 LRV 24



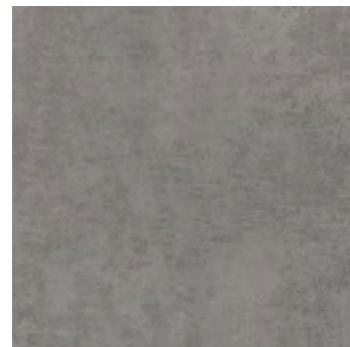
Grey Flourite 4042
NCS S 2002-Y50R w/r 9803 LRV 48



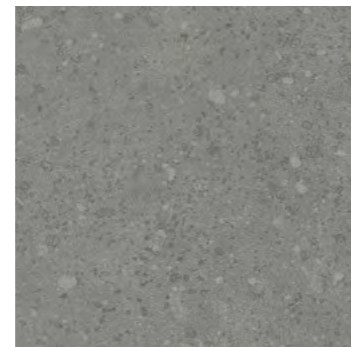
Agate Grey 4043
NCS S 3500-N w/r 9804 LRV 38



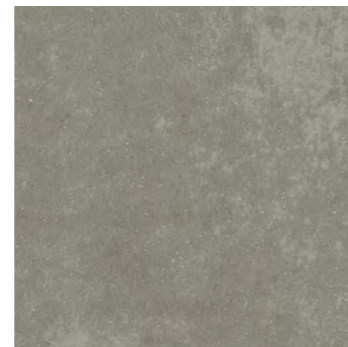
Galena 4047
NCS S 4502-R w/r 9807 LRV 27



Jurassic Stone 6011
NCS S 4500-N w/r 6011 LRV 22



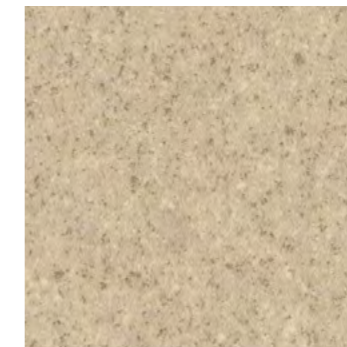
Natural Slate 6014
NCS S 4502-G w/r 6014 LRV 22



Dark Concrete 5089
NCS S 5502-Y w/r 5089 LRV 23



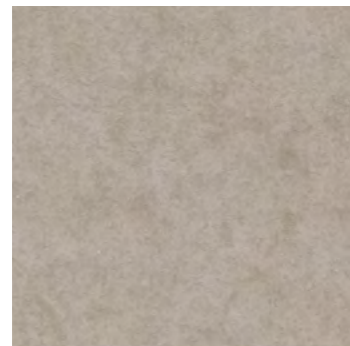
Gypsum 4044
NCS S 2005-Y30R w/r 9800 LRV 50



Copal 4046
NCS S 3010-Y20R w/r 9801 LRV 39



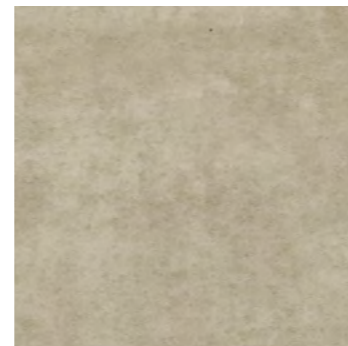
Andesite 4049
NCS S 4005-Y50R w/r 9802 LRV 26



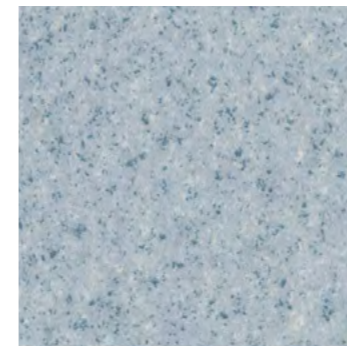
Flagstone Grey 5091
NCS S 4005-Y50R w/r 5091 LRV 35



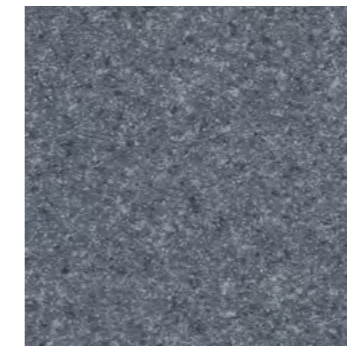
Clay Stone 5092
NCS S 5005-Y80R w/r 5092 LRV 25



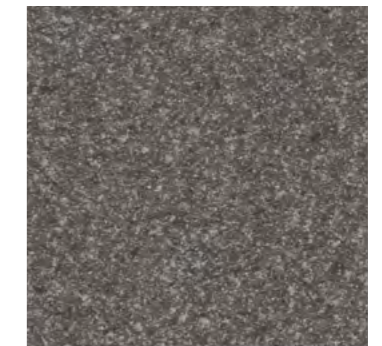
Light Concrete 5087
NCS S 4005-G80Y w/r 5087 LRV 33



Angelite 4051
NCS S 3010-R90B w/r 9806 LRV 40



Blue Quartz 4054
NCS S 6010-R90B w/r 9808 LRV 17



Jetstone 4045
NCS S 6500-N w/r 9805 LRV 15



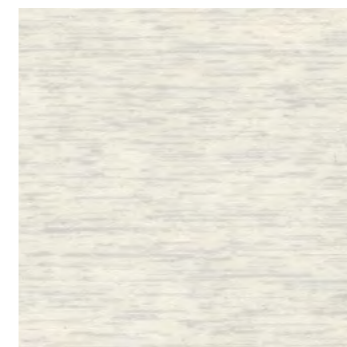
Deep Fossil 5082
NCS S 5502-Y w/r 5082 LRV 22



Pebble Grey 5083
NCS S 4000-N w/r 5083 LRV 34



Muted Stone 5081
NCS S 2005-Y50R w/r 5081 LRV 46



Pearl River 5084
NCS S 1000-N w/r 5084 LRV 63



Valley Rock 5086
NCS S 7005-Y20R w/r 5086 LRV 14

w/r = weld rod NCS = Natural Colour System LRV = Light Reflectance Value

Decoration and shade may vary from the sample shown.

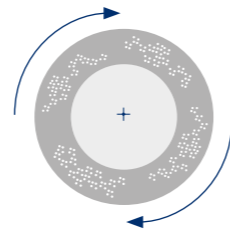
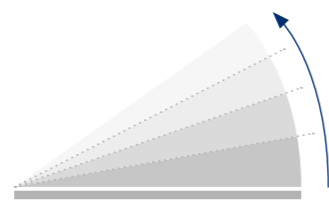
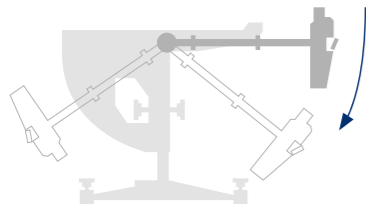
PRODUCT TESTING



In areas where there is a higher potential for slips and trips, it is important to choose a HSE compliant flooring solution that offers sustainable slip resistance for the product's lifetime.

✓
PENDULUM TEST

✓
RAMP TEST

✓
50,000 CYCLES TEST



DIN 51130 & AS 4586




EN 13845
The European safety flooring standard

Conformance to the 50,000 cycles abrasion test demonstrates that the performance particles within a safety floor are durable, offering longevity and sustainable performance for the guaranteed life of the product.

PUR TECHNOLOGY

- ✓ Easy clean
- ✓ Maintain cost savings
- ✓ Optimum appearance retention
- ✓ Resistance to staining & chemicals



TECHNICAL SPECIFICATION

	Gauge	EN 428/ISO 24346	2.0mm
	Wear Layer	EN 429/ISO 24340	0.70mm
	Roll Size	EN 426/ISO 24341	2m x 20m = 40m ²
	Total Weight	EN 430/ISO 23997	2780g/m ²
	General Performance	EN 13845 ASTM F1303	Conforms Conforms
	Use Area	EN 685/ISO 10874	  
	Resistance to Chemicals	EN 423/ISO 26987	Good chemical resistance
	Reaction to Fire	EN 13501-1 ASTM E648	Class Bfl-S1 Class 1
	Abrasion Resistance	EN 13845 EN 649	50,000 cycles Group T
	Enhanced Slip Resistance	The wet slip resistance across all Polysafe products is sustainable throughout the guaranteed life of the product, with strict adherence to HSE Guidelines. For further clarification regarding slip resistance, consult Polyflor.	
		EN 13845 AS 4586 DIN 51130 RRL Pendulum Test Surface Roughness	ESf R10 R10 ≥36 (wet test - 4S Rubber/Slider 96) Rz ≥20µm
	Electrical Behaviour (body voltage)	EN 1815	≤2kV Classified as 'antistatic'
	VOC Emissions	AgBB VOC test Floorscore Finnish M1 Classification	Very low emissions Certified Certified
Agrément Assurance – Polysafe Stone & Wood fx PUR has been independently assessed by the British Board of Agrément and product performance is assured for at least 10 years in recommended use areas. With proper maintenance, the appearance, colour and slip resistance will be retained during this period.			
Environmentally Preferable Flooring - Generic EN 15804 Environmental Product Declaration (EPD) available on request. It is 100% recyclable and contains recycled material. Recyclable via the Recofloor scheme. Visit www.polyflor.com/sustainability .			
Polysafe PUR - Polysafe Stone & Wood fx PUR features a high quality, cross-linked polyurethane reinforcement, UV cured to provide superior cleaning benefits, life cycle maintenance savings and optimum appearance retention. As with all Polysafe products, Polysafe Stone & Wood fx PUR should not have a polish applied.			
Hygiene - All Polyflor commercial sheet vinyl ranges provide a continuous, impervious and hygienic flooring solution which can be confidently cleaned in accordance with recommended maintenance procedures and approved maintenance products. The implementation of an effective cleaning regime is the most important defence against infection.			
	Polysafe safety flooring ranges have good resistance to dilute acids and alkalis, are compatible for use with the most commonly used alco-based hand gels and are suitable for steam cleaning on a periodic basis. Chemical resistance charts available on request. For information regarding handling and installation, adhesives, maintenance, applications, chemical resistance and product warranty, consult Polyflor Customer Technical Services on +44 (0)161 767 1912, or email tech@polyflor.com .		
	As with all Polysafe products, Polysafe Stone & Wood fx PUR should not have a polish applied. For best results, flooring must be reversed laid. The data presented is correct at the time of printing. For latest information, please visit our website polyflor.com .		
	Decoration and shade may vary slightly from the samples shown.		




















For more information regarding our recommended safety flooring finishes or product testing please contact Customer Technical Services Department on **+44 (0)161 767 1912** or email tech@polyflor.com
 Alternatively please visit polyflor.com/safety



+44 (0)161 767 2551
polyflor.com

Polysafe™

POLYFLOR™ INTERNATIONAL

Australia

Polyflor Australia
Tel: 1800 777 425
E-mail: sales@polyflor.com.au

Canada

Polyflor Canada Inc.
Tel: +1 905 364 3000
E-mail: sales@polyflor.ca

China

Polyflor Hong Kong
Tel: +(852) 2865 0101
E-mail: info@polyflor.com.hk

France

James Halstead France SAS
Tel: +33 (0) 8 20 20 32 11
E-mail: info@jhfrance.fr

Germany

objectflor Art und Design Belags GmbH
Tel: +49 (0) 2236 966 330
E-mail: info@objectflor.de

India

Polyflor India Pvt Ltd
Tel: +91 22 4023 2485
E-mail: info@polyflor.co.in

Ireland

Polyflor Ireland
Tel: +353 (1) 864 9304
E-mail: salesireland@polyflor.com

Middle East

Polyflor FZE
Tel: +971 50 406 8114
E-mail: aelwakil@polyflorfze.ae

New Zealand

Polyflor New Zealand Ltd
Tel: 0800 765 935
E-mail: sales@polyflor.co.nz

Norway

Polyflor Nordic
Tel: +47 23 00 84 00
E-mail: firmapost@polyflor.no

Poland

Polflor Sp. Z o.o.
Tel: +48 (0) 61 820 3155
E-mail: polyflor@polflor.com.pl

South Africa

Poly Sales Africa (Pty.) Ltd
Tel: +27 (0) 11 609 3500
E-mail: info@polyflor.co.za

Sweden

FalckDesign AB
Tel: +46 (0) 300 15820
E-mail: info@falckdesign.com

POLYFLOR™ UK

Polyflor Ltd. PO Box 3, Radcliffe New Road,
Whitefield, Manchester, M45 7NR

UK Sales Direct: +44 (0) 161 767 1122
UK Samples Direct: +44 (0) 161 767 2551
Export Sales Direct: +44 (0) 161 767 1913
Technical Support: +44 (0) 161 767 1912
E-mail: info@polyflor.com

polyflor.com/safety

POLYFLOR™
COVERING THE WORLD

